

# **EN** Manual for Solight Smart WiFi Temperature and Humidity Sensor 1D100TH



## Parameters

Dimensions	70x25x20mm
Input voltage	DC3V; 2x LR03 batteries
Quiet current	$\leq 6 \mu\text{A}$
Low voltage	$\leq 2.5 \text{ V}$
Wi-Fi	802.11 b/g/n; 2.4GHz
Working temperature	$-10^{\circ}\text{C} \sim 55^{\circ}\text{C}$
Working humidity	10% ~ 90% RH
The device is intended for indoor use	

## Download the mobile app

Download the Smart Life mobile app on Google Play for Android devices or on the App Store for iOS devices.



## Registration

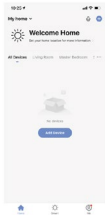
Register in the app using your email address and once you have completed the registration, click on "Home" and then "+" in the app interface or click on "Add Device".

Then select "Sensors" and select "Temperature and Humidity Sensor (Wi-Fi)".

# Pairing devices

The user can connect to the WiFi network in the following ways:

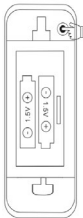
1. Bluetooth mode
2. EZ mode



## 1. Pairing with Bluetooth mode

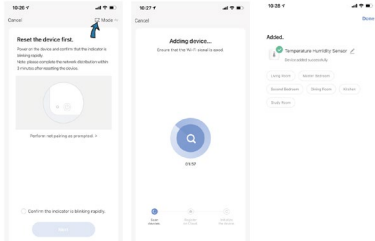
First turn on Bluetooth on your mobile phone, then open the Smart Life app and select "+". Press and hold the pairing button for 5 seconds until the LED indicator flashes. The mobile app will then display "Devices to be added: 1". Finally, press "Go to add" , it will automatically connect to the Wi-Fi network.

Pairing button ↓



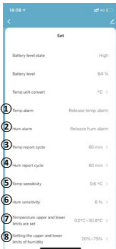
## 2. Pairing with "EZ" mode

EZ (Easy-Connect Network) mode is a simplified pairing. Press and hold the pairing button on the sensor for 5 seconds, the LED indicator will flash rapidly. Select "EZ mode" in the mobile app and press the "Next" button. The device will pair automatically.



## When connected to WiFi:

Click on the sensor icon to enter the application interface and make further settings. Here you can preset the temperature and humidity value for the alert.



**① ② : Temperature/humidity alarm:**  
The first is the "higher temperature/humidity alarm", the second is the "lower temperature/humidity alarm", the third is the "lower temperature/humidity alarm" (the third means the temperature/humidity returns to the set range).

**③ ④ : Temperature/humidity reporting cycle:**  
Set the time for synchronizing the sensor's temperature and humidity values with the application. (The factory default setting is 120 minutes)

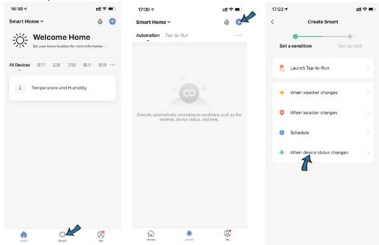
**⑤ ⑥ : Temperature/humidity sensitivity:**  
Sensor temperature/humidity sensitivity settings are synchronized with the app when the upper/lower temperature/humidity preset is set. For example, now the temperature is 28°C and humidity is 70%, the temperature/humidity sensitivity is  $\pm 0.6/6\%$ , then the sensor temperature/humidity value is synchronized with the application when the temperature/humidity is 28.6°C or 27.4°C /76% or 64%. (Factory default: temperature sensitivity is 0.6°C, humidity sensitivity is 6%).

**⑦ ⑧ : Sets the upper and lower limits of temperature/humidity:**  
Set the temperature/humidity range.



# INTELLIGENT INTERCONNECTION

You can use smart connectivity when you change the environment. For example, the air conditioning automatically switches on when the room temperature exceeds 35 °C. And the humidifier will start if the humidity is below 20%.



## **Device sharing**

You can share the added devices with family members so they can also monitor the status of their surroundings.

## **Temperature unit selection in the application**

You can select °C or °F as the temperature unit via the app.

## **Third-party voice control**

Compatible with Amazon Alexa, Google Assistant



The product has been issued with a CE Declaration of Conformity and a Declaration of Performance in accordance with the applicable regulations. On request from the manufacturer: [info@solight.cz](mailto:info@solight.cz) or download [www.solight.cz](http://www.solight.cz)